

EMANAT / Matija Ferlin

Staging a play: The glass menagerie

by Tennessee Williams

Concept and direction: Matija Ferlin

TECHNICAL RIDER

Update: October 26th 2018

Concept and direction Matija Ferlin mailto:matija_ferlin@yahoo.co.uk		
EMANAT OFFICE Contact Emanat office mailto:info@emanat.si	EMANAT Company Administration Andreja Lapuh Maležič mailto:info@emanat.si L - line: 00 386 (1) 43 05 724	EMANAT Company Artistic Director Maja Delak mailto:maja@emanat.si M - line: 00 386 (31) 31 10 79
Composer and Sound Engineer Luka Prinčič mailto:nova@deviator.si M - line: 00 386 (40) 66 77 98	Set designer Mauricio Ferlin mailto:mauroferlin@yahoo.com M - line: 00 386 (40) 29 55 85	LD and Technical direction Saša Fistrić mailto:onelxcandle@gmail.com M - line: 00 385 (95) 91 34 024



The organizer should provide the producer with technical information about the venue (dimensions, a list of technical equipment, stage plan – ground plan, side view). On the basis of this information, the performance can be adjusted to the venue.

SOUND and LIGHT TO BE OPERATED BY COMPANY TECHNICIANS.

1. GENERAL INFORMATION

Technical rider is a part of the contract between the producer and the organizer of the performance. The requirements listed in this rider are designed to allow the best possible realization of the performance. Any departures from the requirements listed below needs to be agreed upon by common consent between the producer, the performance technical assistant and the organizer. Technical adaptations are possible and are matter of further arrangements.

Running time: 85 minutes without intermission

Sound Designer/technician: 1

Set Designer/technician: 1

Light and Technical direction/technician: 1

Make up and hair: 1

Technical rider contains three plost:

- LIGHT plot (page **16**)
- SOUND plot (page **17**)
- STAGE and SET DESIGN plot (page **18**)

2. STAGE

We require

We need you to provide photos of space (stage and audience).

- Ideal Stage Area: **14mW x 13mD**
- Minimum Stage Area: **10mW x 10mD**
- WHITE dance floor: **14mW x 13mD**
- WHITE back drop: **15mW x 6mH**
- **1 x WHITE table (dimensions 2mW x 1mD x 0,80mH)**
- **5 x CHAIR**
- **1 x Gaffa tape / WHITE**
- **1 x PVC tape / WHITE**
- **RIGGING:** We need **1** fly bar over the stage area, at the height of minimum **5,50** to **6,00** meters for hanging WHITE back drop.

DESCRIPTION OF SPACE

At our arrival, the stage and theatrical space have to be empty and clean. We need bare space without any borders, legs and backdrop; please remove everything that might be seen by the audience.

WHITE dance floor to cover with it all stage area; please follow photos on page **8,9** and **10** of technical rider.

WHITE back drop to cover the back wall with it, from wall to wall; please follow photos on page **8,9** and **10** of technical rider.

TABLE please follow the photos on page **15** of technical rider.

CHAIR please follow the photo on page **11** of technical rider. **PLEASE**, send us couple of chair photos that we can decide.

SET DESIGN fixing "set design" to dance floor is made with GAFFA TAPE; **no screw in dance floor**. Set design is made with wooden supports that are light and set aside for every **0,60m.** ; please follow the photo on page **12** the **13** of technical rider.

VACUUM CLEANER:

After the show, vacuum cleaner is needed to remove snow.

The stage should be heated to maintain the temperature of 20°C.

We bring:

1 x Set design in several pieces; wooden supports and wall structure

01 x Hand made SNOW machine (please follow snow machine photos on page **14** of technical rider).

3. LIGHT

We require

We need you to provide plans (DWG or PDF) of your stage with fly bars and a list of your **lighting** equipment stock list, so we can send you adapted light plot.

- 53 x PC / 1000W
- 12 x ETC / Source Four Zoom 25°-50° / 750W
- 04 x Asymmetric Cyclorama Floods / 1000W
- 01 x Digital Lighting Board / subs + cue / DMX512
- cables and multi plugs

Hook and security cabel: **for all lighting units**

Filter holders: **for all lighting units**

Barndoor: **48** x PC 1 kW or **BLACK** Aluminium tape

Adequate equipment (genie, ladders, focusing tower) to focus.

Filter cut list:

- 53 x **L201** for PC /1000W
- 53 x **R114** for PC /1000W
- 12 x **L021** for ETC / Source Four Zoom 25°-50° / 750W
- 12 x **R114**for ETC / Source Four Zoom 25°-50° / 750W

The show needs 2 things:

1. a **complete** blackout onstage with minimal light leak from FOH. This will require switching off blue works light and covering or masking emergency lighting. Please make sure that all licences and permissions are secured before the show.

2. The **Lighting Board** should be located in the audience last row together with **Sound Board**.

4. SOUND

We require

We need you to provide a list of your **sound** equipment stock list (Manufactures, Models), so we can send you adapted sound requirements.

- 01 x 8 channel mixer with separate independent stereo groups / aux / control for MAIN out and MONITORS (Yamaha, SoundCraft, or equivalent)
- 02 x min 500WATT quality monitors on stands on the stage
- 02 x (or more) min 800WATT quality speakers for audience (on stands or hanging from the grid)
- 02 x min 1000WATT quality subwoofers
- 01 x Wireless Lavalier Microphone / bodypack

The **Sound Board** should be located in the audience last row together with **Light Board**.

5. PROPS

We require

- 01 x printer / CANON (MP 250) / black ink
- 01 x LAN cable (long enough to reach from stage to control desk; light and sound position)
- 02 x USB-LAN adapter for Canon printer
- 25 x A4 white paper (per show)

Note:

- **PRINTER** is used during short intermission, the intermission can be max two to three minutes in show; important is printing **SPEED**; the printing document contains **6** pages and it's printed in three copies, in total **18** pages

6. SCHEDULE

If the following schedule is not suitable for theatre / organizer, please contact the producer or technician of the company to agree a new schedule.

Before the set – up: please make possible for the company technicians to have a look at the performing space.

CREW CALLS

WORK SCHEDULE

<p>Set up and performance day: STAGE: 02 LIGHTS: 04 SOUND:01</p> <p>One to operate fly bars and theatre equipment if needed.</p>	<p>09:00 – 13:00 set up / stage, light, sound, focus light 13:00 – 14:00 break 14:00 – 16:00 focus light / plotting cue 16:00 – 18:00 warming up and rehearsal / sound check 17:30 – 20:00 make up and hair 18:00 – 19:00 break 19:00 – 19:30 preparing for the show / CLEANING (not the set design) 20:00 SHOW</p>
<p>All other performance days: LIGHTS: 01 (board operator) SOUND:01 (board operator)</p>	<p>16:00 – 18:00 warming up and rehearsal / sound 18:00 – 19:00 break 17:30 – 20:00 make up and hair 19:00 – 19:30 preparing for the show / CLEANING (not the set design) 20:00 SHOW</p>
<p>Last performance: GET OUT STAGE: 02</p>	<p>Directly after the show / re – set of set design</p>

Note:

- during set up and performance day and last performance day stage technicians of theatre will help technical crew of show to unpack and pack the set design.

7. WARDROBE

We require

- 01 x spacious wardrobe (female)
- 01 x spacious wardrobe (male)
- 15 x hangers in female wardrobe for COSTUMES
- 10 x hangers in male wardrobe for COSTUMES
- 03 x clean towels in female wardrobe / per show
- 02 x clean towels in male wardrobe /per show
- hot showers available at all time
- iron and ironing board (steam iron)
- rack hangers for costumes in female and male wardrobe

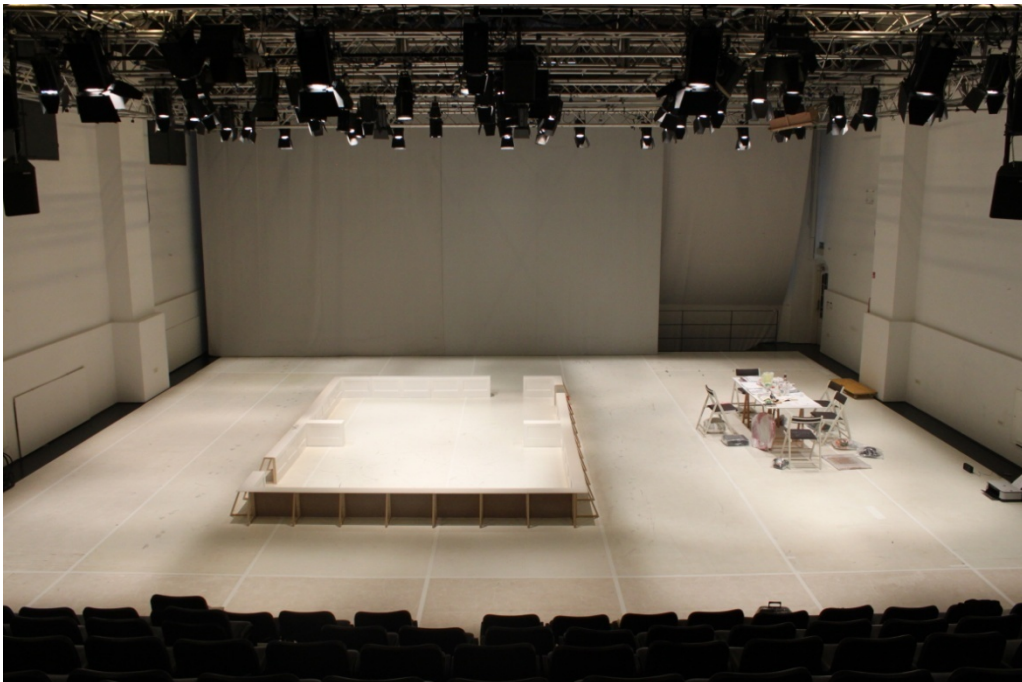
Note:

- In case of playing more than one show we need a WARDROBE maintenance to clean THE COSTUMES".

PHOTO:

WHITE dance floor (all stage area)

WHITE back drop (wall to wall) on these photos we have used back stage stairs for intermission in show





Staging a play: The Glass Menagerie

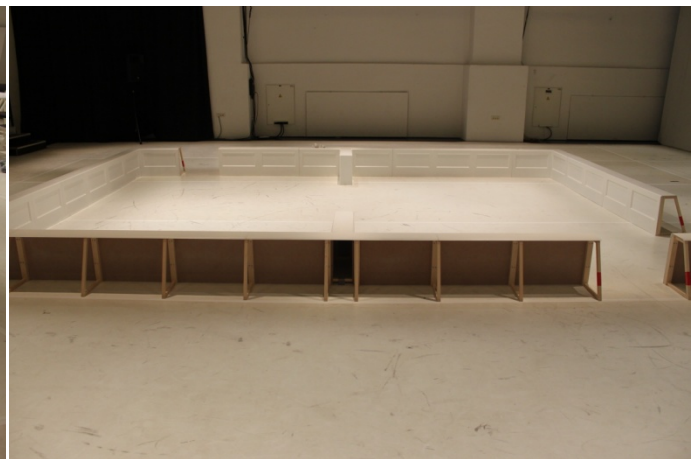
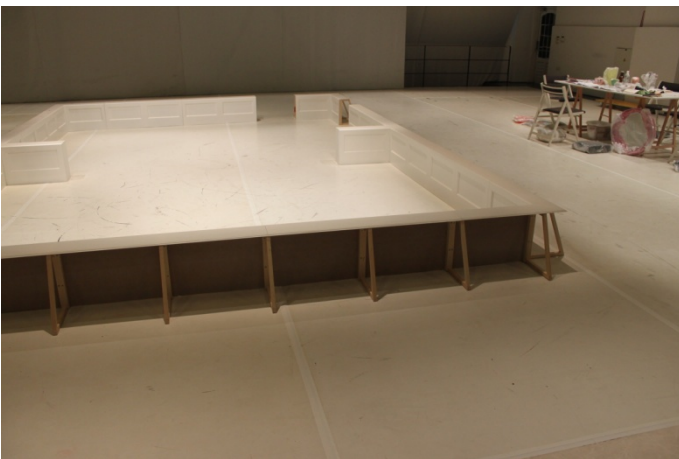
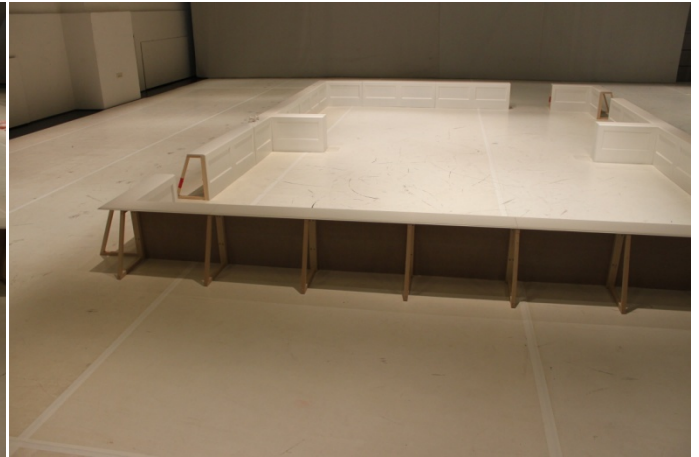
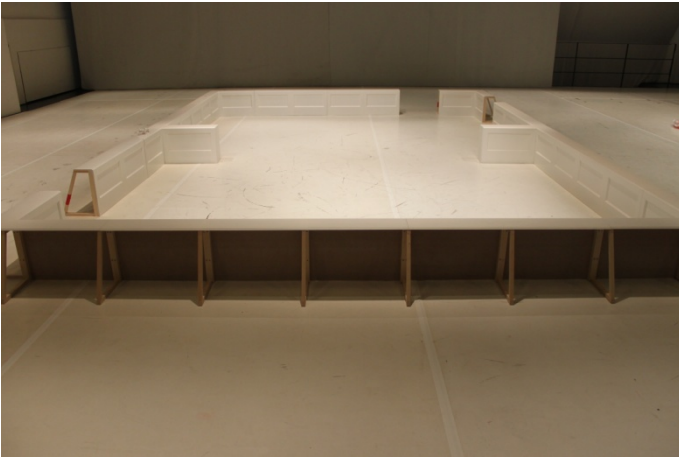
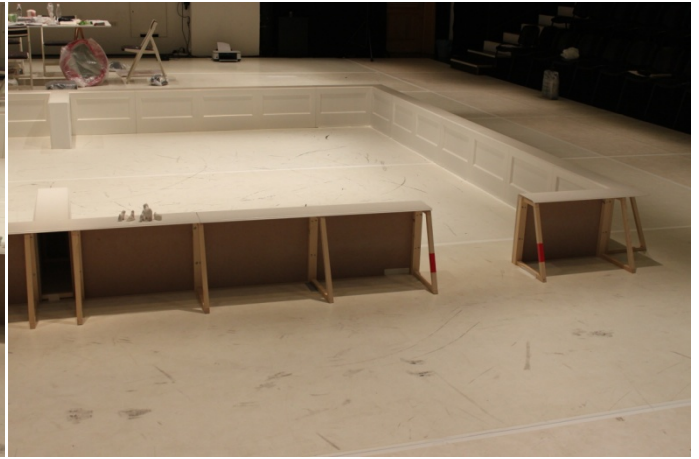
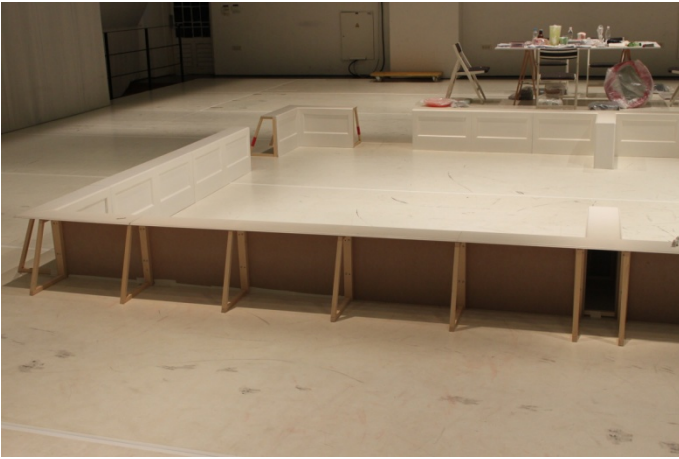


Staging a play: The Glass Menagerie

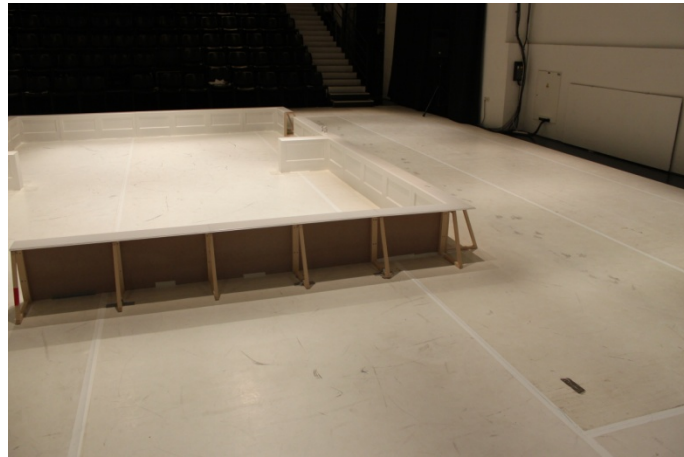
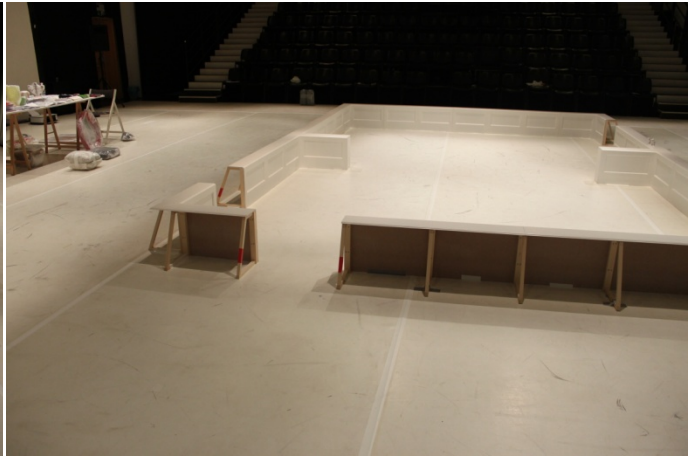
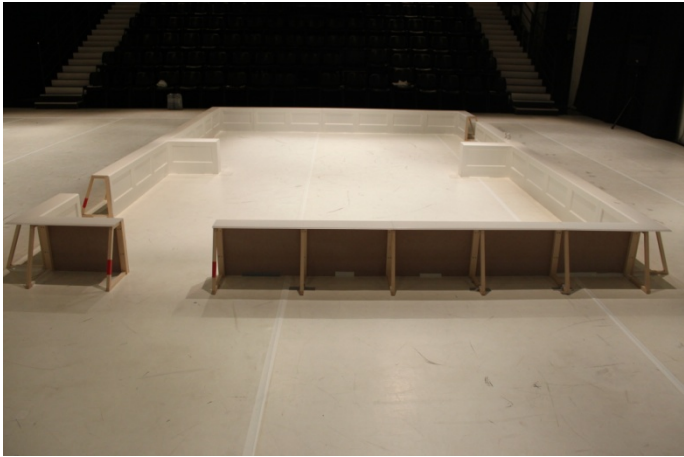
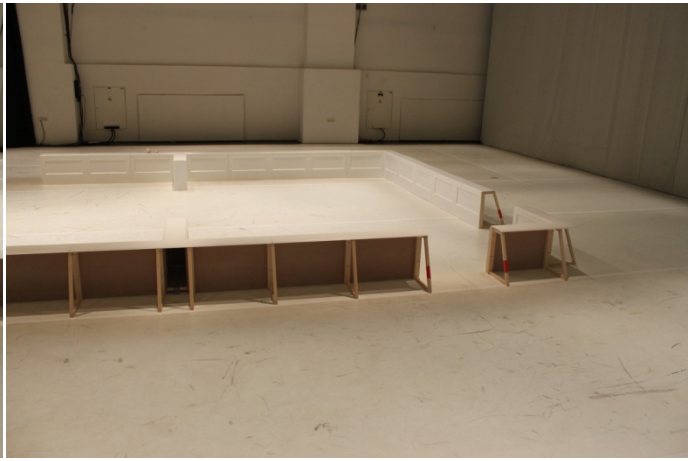
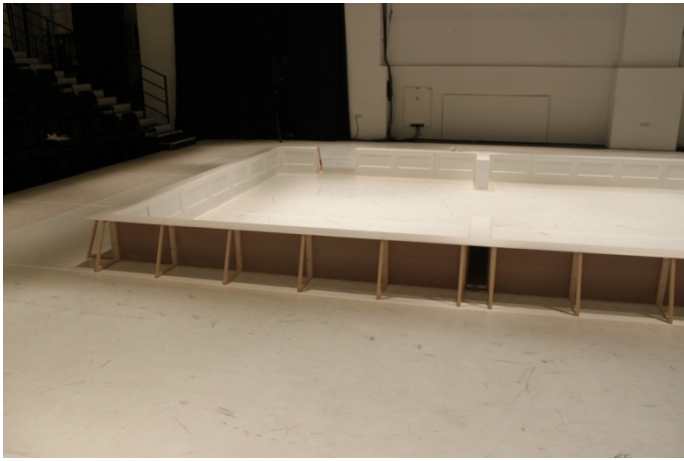
CHAIR



SET DESIGN



Staging a play: The Glass Menagerie



Hand made SNOW machine

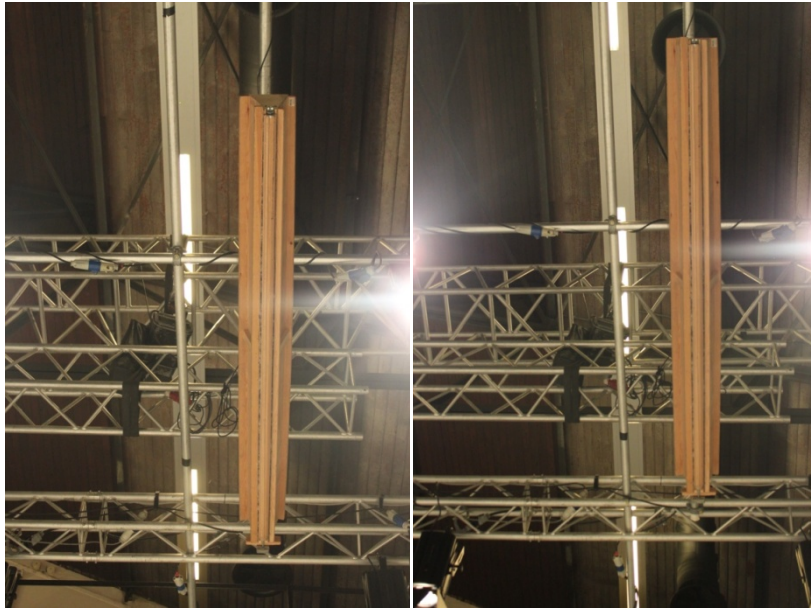


TABLE and CHAIR

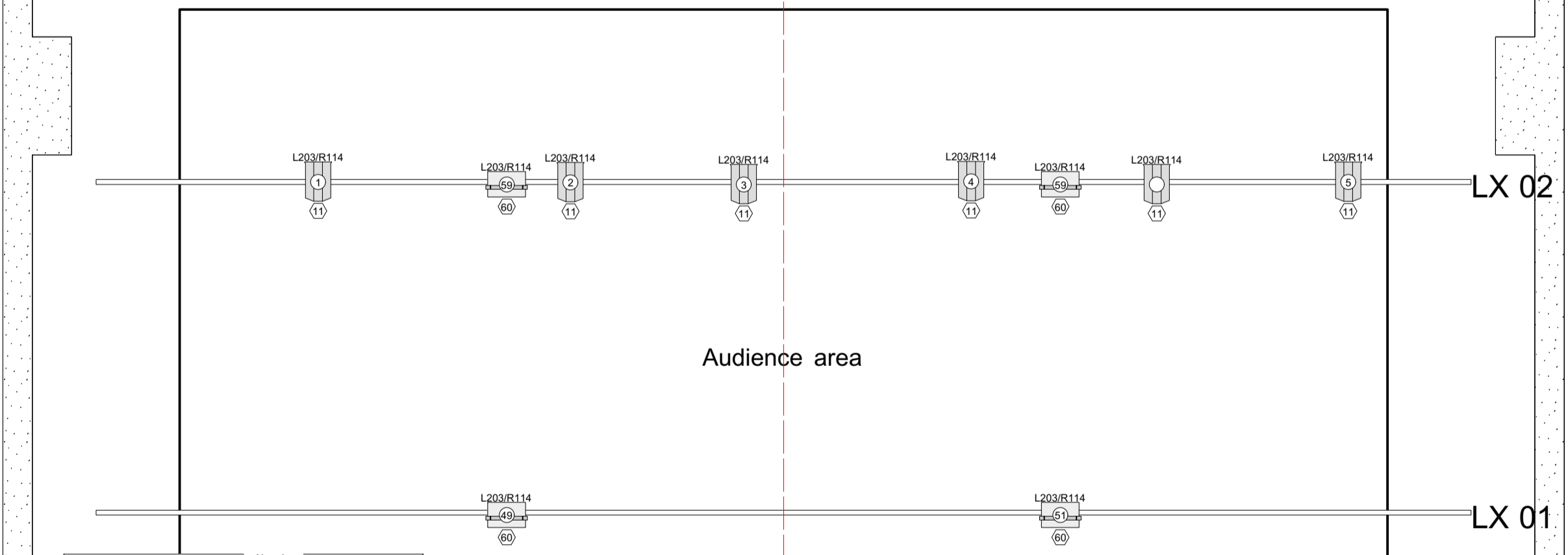
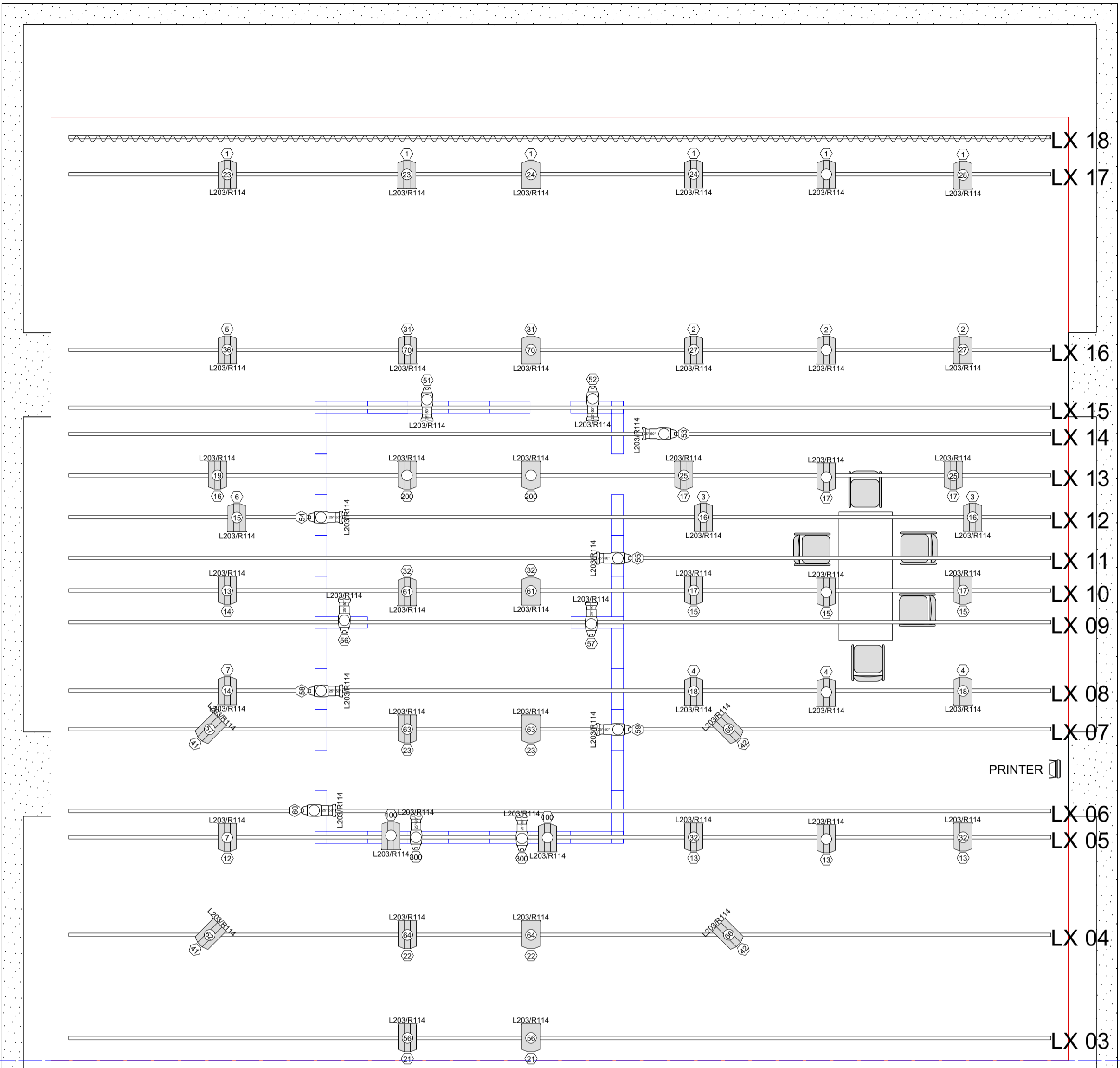


Staging a play: The Glass Menagerie



EMANAT production

Staging a play: The Glass Menagerie



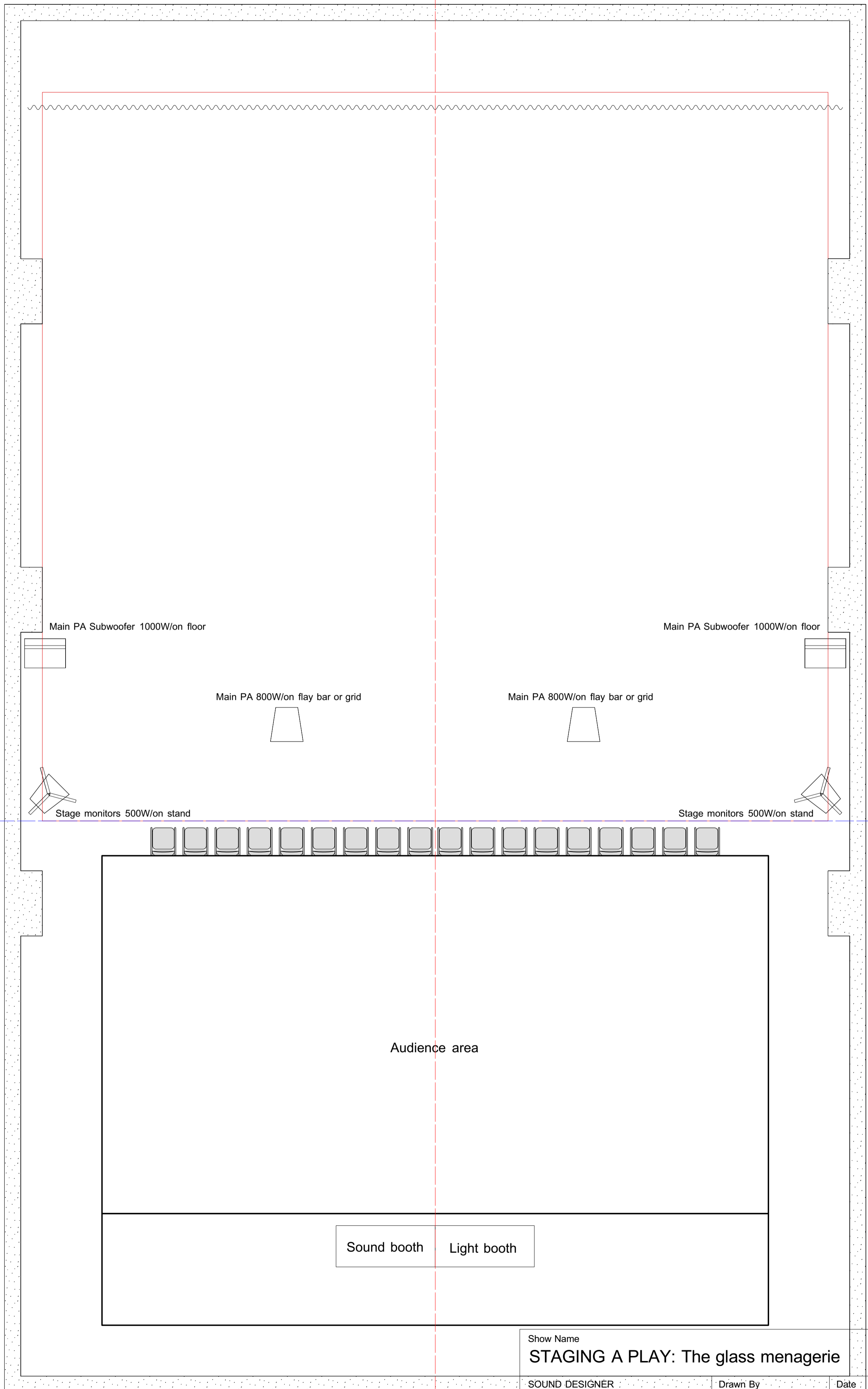
Instruments	Num In Inventory	Used	Remaining
ETC Source 4 Zoom/25-50	12	12	0
PC / 1000W	53	53	0
Aurora Cyc	4	4	0

Legend
Color
Dimmer
Channel

Sound booth Light booth

Show Name STAGING A PLAY: The glass menagerie		
LIGHT DESIGNER Sasa Fistic	Drawn By Sasa Fistic	Date: 20/01/2016
CAD File Name Light plot		

Central line



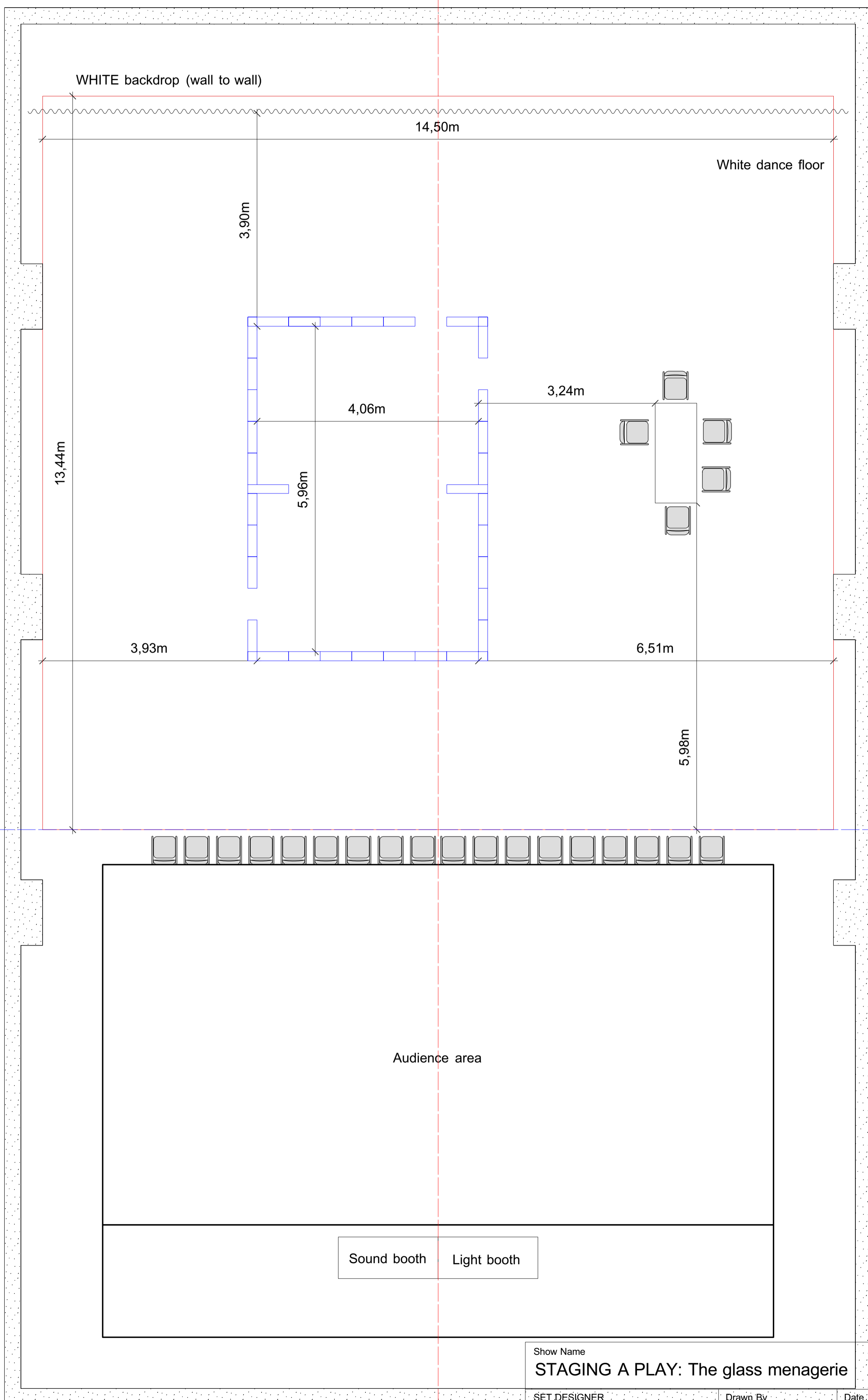
Setting line

Audience area

Sound booth Light booth

Central line

Show Name STAGING A PLAY: The glass menagerie		
SOUND DESIGNER Luka Princic	Drawn By Sasa Fistic	Date 20/01/2016
CAD File Name Sound PLOT		



Setting line

Audience area

Sound booth Light booth

Central line

Show Name STAGING A PLAY: The glass menagerie		
SET DESIGNER Mauricio Ferlin	Drawn By Sasa Fistic	Date: 20/01/2016
CAD File Name Set Design / Stage PLOT		